

Bilag 1. Lodtrækningskemaer til Cupturneringer

International Lodtrækning

Således placeres seedede spillere i cupturnering. Se eksempel på spilletræ på de næste sider. Spilletræ udarbejdet efter internationale bestemmelser. Spilletræ udarbejdes her altid til 16, 32, 64, el. 128 deltagere.

| Antal deltagere | Antal seedede spillere | Seedede spilleres placering | | | | Antal Oversiddere | Placering af oversiddere | |
|-----------------|------------------------|-----------------------------|----|------|------------|-------------------|--------------------------|----------------------|
| | | 1 | 2 | 3/4 | 5/8 | | Øverste halvdel | Nederste halvdel |
| 8 | 2 | 1 | 16 | - | - | 8 | 2,4,6,8 | 9,11,13,15 |
| 9 | 2 | 1 | 16 | - | - | 7 | 2,4,6,8 | 11,13,15 |
| 10 | 2 | 1 | 16 | - | - | 6 | 2,4,6 | 11,13,15 |
| 11 | 2 | 1 | 16 | - | - | 5 | 2,4,6 | 11,15 |
| 12 | 2 | 1 | 16 | - | - | 4 | 2,6 | 11,15 |
| 13 | 2 | 1 | 16 | - | - | 3 | 2,6 | 15 |
| 14 | 2 | 1 | 16 | - | - | 2 | 2 | 15 |
| 15 | 2 | 1 | 16 | - | - | 1 | 2 | - |
| 16 | 4 | 1 | 16 | 5,12 | - | 0 | - | - |
| 17 | 4 | 1 | 32 | 9,24 | - | 15 | 2,4,6,8,10,12,14,16 | 19,21,23,25,27,29,31 |
| 18 | 4 | 1 | 32 | 9,24 | - | 14 | 2,4,6,8,10,12,14 | 19,21,23,25,27,29,31 |
| 19 | 4 | 1 | 32 | 9,24 | - | 13 | 2,4,6,8,10,12,14 | 19,21,23,27,29,31 |
| 20 | 4 | 1 | 32 | 9,24 | - | 12 | 2,4,6,10,12,14 | 19,21,23,27,29,31 |
| 21 | 4 | 1 | 32 | 9,24 | - | 11 | 2,4,6,10,12,14 | 19,23,27,29,31 |
| 22 | 4 | 1 | 32 | 9,24 | - | 10 | 2,4,6,10,14 | 19,23,27,29,31 |
| 23 | 4 | 1 | 32 | 9,24 | - | 9 | 2,4,6,10,14 | 19,23,27,31 |
| 24 | 4 | 1 | 32 | 9,24 | - | 8 | 2,6,10,14 | 19,23,27,31 |
| 25 | 4 | 1 | 32 | 9,24 | - | 7 | 2,6,10,14 | 23,27,31 |
| 26 | 4 | 1 | 32 | 9,24 | - | 6 | 2,6,10 | 23,27,31 |
| 27 | 4 | 1 | 32 | 9,24 | - | 5 | 2,6,10 | 23,31 |
| 28 | 4 | 1 | 32 | 9,24 | - | 4 | 2,10 | 23,31 |
| 29 | 4 | 1 | 32 | 9,24 | - | 3 | 2,10 | 31 |
| 30 | 4 | 1 | 32 | 9,24 | - | 2 | 2 | 31 |
| 31 | 4 | 1 | 32 | 9,24 | - | 1 | 2 | - |
| 32 | 8 | 1 | 32 | 9,24 | 5,13,20,28 | 0 | - | - |

(fortsættes næste side)

Eksempel:

Ved 25 anmeldelser skal 4 spillere seedes. De placeres på plads nr. 1 og plads nr. 32 i et spilletræ med 32 pladser. 3. og 4. seedede placeres på plads nr. 9 og plads nr. 24 i spilletræet (efter lodtrækning).

Der vil være 7 oversiddere, som placeres på pladserne 2,6,10,14 i øverste halvdel og på pladserne 23,27,31 i nederste halvdel.

Badminton Danmark

Badminton.dk

info@badminton.dk

Tlf. +45 70 60 50 76

DGI Badminton

DGI.dk/badminton

badminton@info.dgi.dk

Tlf. +45 79 40 40 59

fortsat

| Antal deltagere | Antal seedede spillere | Seedede spilleres placering | | | | Antal oversiddere | Placering af oversiddere | |
|-----------------|------------------------|-----------------------------|----|-------|------------|-------------------|---|--|
| | | 1 | 2 | 3/4 | 5/8 | | Øverste halvdel | Nederste halvdel |
| 33 | 8 | 1 | 64 | 17,48 | 9,25,40,56 | 31 | 2,4,6,8,10,12,14,16,18, 20,22,24,26,28,30,32 | 35,37,39,41,43,45,47,49, 51,53,55,57,59,61,63 |
| 34 | 8 | 1 | 64 | 17,48 | 9,25,40,56 | 30 | 2,4,6,8,10,12,14,16,18, 20,22,24,26,28,30 | 35,37,39,41,43,45,47,49, 51,53,55,57,59,61,63 |
| 35 | 8 | 1 | 64 | 17,48 | 9,25,40,56 | 29 | 2,4,6,8,10,12,14,16,18, 20,22,24,26,28,30 | 35,37,39,41,43,45,47, 51,53,55,57,59,61,63 |
| 36 | 8 | 1 | 64 | 17,48 | 9,25,40,56 | 28 | 2,4,6,8,10,12,14,18, 20,22,24,26,28,30 | 35,37,39,41,43,45,47, 51,53,55,57,59,61,63 |
| 37 | 8 | 1 | 64 | 17,48 | 9,25,40,56 | 27 | 2,4,6,8,10,12,14,18, 20,22,24,26,28,30 | 35,37,39,43,45,47, 51,53,55,57,59,61,63 |
| 38 | 8 | 1 | 64 | 17,48 | 9,25,40,56 | 26 | 2,4,6,8,10,12,14,18, 20,22,26,28,30 | 35,37,39,43,45,47, 51,53,55,57,59,61,63 |
| 39 | 8 | 1 | 64 | 17,48 | 9,25,40,56 | 25 | 2,4,6,8,10,12,14,18, 20,22,26,28,30 | 35,37,39,43,45,47, 51,53,55,59,61,63 |
| 40 | 8 | 1 | 64 | 17,48 | 9,25,40,56 | 24 | 2,4,6,10,12,14,18, 20,22,26,28,30 | 35,37,39,43,45,47, 51,53,55,59,61,63 |
| 41 | 8 | 1 | 64 | 17,48 | 9,25,40,56 | 23 | 2,4,6,10,12,14,18, 20,22,26,28,30 | 37,39,43,45,47, 51,53,55,59,61,63 |
| 42 | 8 | 1 | 64 | 17,48 | 9,25,40,56 | 22 | 2,4,6,10,12,14,18, 20,22,26,28 | 37,39,43,45,47, 51,53,55,59,61,63 |
| 43 | 8 | 1 | 64 | 17,48 | 9,25,40,56 | 21 | 2,4,6,10,12,14,18, 20,22,26,28 | 37,39,43,45,47, 53,55,59,61,63 |
| 44 | 8 | 1 | 64 | 17,48 | 9,25,40,56 | 20 | 2,4,6,10,12,18, 20,22,26,28 | 37,39,43,45,47, 53,55,59,61,63 |
| 45 | 8 | 1 | 64 | 17,48 | 9,25,40,56 | 19 | 2,4,6,10,12,18, 20,22,26,28 | 37,39,45,47, 53,55,59,61,63 |
| 46 | 8 | 1 | 64 | 17,48 | 9,25,40,56 | 18 | 2,4,6,10,12,18, 20,26,28 | 37,39,45,47, 53,55,59,61,63 |
| 47 | 8 | 1 | 64 | 17,48 | 9,25,40,56 | 17 | 2,4,6,10,12,18, 20,26,28 | 37,39,45,47, 53,55,61,63 |
| 48 | 8 | 1 | 64 | 17,48 | 9,25,40,56 | 16 | 2,4,10,12,18, 20,26,28 | 37,39,45,47, 53,55,61,63 |
| 49 | 8 | 1 | 64 | 17,48 | 9,25,40,56 | 15 | 2,4,10,12,18,20,26,28 | 39,45,47,53,55,61,63 |
| 50 | 8 | 1 | 64 | 17,48 | 9,25,40,56 | 14 | 2,4,10,12,18,20,26 | 39,45,47,53,55,61,63 |

Badminton Danmark

Badminton.dk

info@badminton.dk

Tlf. +45 70 60 50 76

DGI Badminton

DGI.dk/badminton

badminton@info.dgi.dk

Tlf. +45 79 40 40 59

| | | | | | | | | |
|----|---|---|----|-------|------------|----|--------------------|-------------------|
| 51 | 8 | 1 | 64 | 17,48 | 9,25,40,56 | 13 | 2,4,10,12,18,20,26 | 39,45,47,55,61,63 |
| 52 | 8 | 1 | 64 | 17,48 | 9,25,40,56 | 12 | 2,4,10,18,20,26 | 39,45,47,55,61,63 |
| 53 | 8 | 1 | 64 | 17,48 | 9,25,40,56 | 11 | 2,4,10,18,20,26 | 39,47,55,61,63 |
| 54 | 8 | 1 | 64 | 17,48 | 9,25,40,56 | 10 | 2,4,10,18,26 | 39,47,55,61,63 |
| 55 | 8 | 1 | 64 | 17,48 | 9,25,40,56 | 9 | 2,4,10,18,26 | 39,47,55,63 |
| 56 | 8 | 1 | 64 | 17,48 | 9,25,40,56 | 8 | 2,10,18,26 | 39,47,55,63 |
| 57 | 8 | 1 | 64 | 17,48 | 9,25,40,56 | 7 | 2,10,18,26 | 47,55,63 |
| 58 | 8 | 1 | 64 | 17,48 | 9,25,40,56 | 6 | 2,10,18 | 47,55,63 |
| 59 | 8 | 1 | 64 | 17,48 | 9,25,40,56 | 5 | 2,10,18 | 47,63 |
| 60 | 8 | 1 | 64 | 17,48 | 9,25,40,56 | 4 | 2,18 | 47,63 |
| 61 | 8 | 1 | 64 | 17,48 | 9,25,40,56 | 3 | 2,18 | 63 |
| 62 | 8 | 1 | 64 | 17,48 | 9,25,40,56 | 2 | 2 | 63 |
| 63 | 8 | 1 | 64 | 17,48 | 9,25,40,56 | 1 | 2 | - |

(fortsættes næste side)



**BADMINTON
DANMARK**

fortsat

| Antal deltagere | Antal seedede spillere | Seedede spilleres placering | | | | | Antal oversiddere | Placering af oversiddere | |
|-----------------|------------------------|-----------------------------|--------------|-------|--------------|----------------------------------|-------------------|---|--|
| | | 1 | 2 "skema" | 3/4 | 5/8 | 9/16 | | Øverste halvdel | Nederste halvdel |
| 64 | 16 | 1 | 64 | 17,48 | 9,25,40,56 | 5,13,21,29, 36,44,52,60 | | - | - |
| 65 | 16 | 1 | 128 | 33,96 | 17,49,80,112 | 9,25,41,57,72, 63 88,104,120, | 63 | 2,4,6,8,10,12,14,16, 18,20,22,24,26,28,30,32, 34,36,38,40,42,44,46,48, 50,52,54,56,58,60,62,64 | 67,69,71,73,75,77,79, 81,83,85,87,89,91,93,95, 97,99,101,103,105,107,109,111, 113,115,117,119,121,123,125,127 |
| 66 | 16 | 1 | 128 | 33,96 | 17,49,80,112 | 9,25,41,57,72, 62 88,104,120, | 62 | 2,4,6,8,10,12,14,16 18,20,22,24,26,28,30,32, 34,36,38,40,42,44,46,48, 50,52,54,56,58,60,62 | 67,69,71,73,75,77,79, 81,83,85,87,89,91,93,95, 97,99,101,103,105,107,109,111, 113,115,117,119,121,123,125,127 |
| 67 | 16 | 1 | 128 | 33,96 | 17,49,80,112 | 9,25,41,57,72, 61 88,104,120, | 61 | 2,4,6,8,10,12,14,16, 18,20,22,24,26,28,30,32 34,36,38,40,42,44,46,48, 50,52,54,56,58,60,62 | 67,69,71,73,75,77,79, 81,83,85,87,89,91,93,95, 99,101,103,105,107,109,111, 113,115,117,119,121,123,125,127 |
| 68 | 16 | 1 | 128 | 33,96 | 17,49,80,112 | 9,25,41,57,72, 60 88,104,120, | 60 | 2,4,6,8,10,12,14,16, 18,20,22,24,26,28,30, 34,36,38,40,42,44,46,48, 50,52,54,56,58,60,62, | 67,69,71,73,75,77,79, 81,83,85,87,89,91,93,95, 99,101,103,105,107,109,111, 113,115,117,119,121,123,125,127 |
| 69 | 16 | 1 | 128 | 33,96 | 17,49,80,112 | 9,25,41,57,72, 59 88,104,120, | 59 | 2,4,6,8,10,12,14,16, 18,20,22,24,26,28,30, 34,36,38,40,42,44,46,48, 50,52,54,56,58,60,62, | 67,69,71,73,75,77,79, 83,85,87,89,91,93,95, 99,101,103,105,107,109,111, 113,115,117,119,121,123,125,127 |
| 70 | 16 | 1 | 128 | 33,96 | 17,49,80,112 | 9,25,41,57,72, 58 88,104,120, | 58 | 2,4,6,8,10,12,14,16, 18,20,22,24,26,28,30, 34,36,38,40,42,44,46, 50,52,54,56,58,60,62, | 67,69,71,73,75,77,79, 83,85,87,89,91,93,95, 99,101,103,105,107,109,111, 113,115,117,119,121,123,125,127 |
| 71 | 16 | 1 | 128 | 33,96 | 17,49,80,112 | 9,25,41,57,72, 57 88,104,120, | 57 | 2,4,6,8,10,12,14,16, 18,20,22,24,26,28,30, 34,36,38,40,42,44,46, 50,52,54,56,58,60,62, | 67,69,71,73,75,77,79, 83,85,87,89,91,93,95, 99,101,103,105,107,109,111, 115,117,119,121,123,125,127 |
| 72 | 16 | 1 | 128 | 33,96 | 17,49,80,112 | 9,25,41,57,72, 56 | 56 | 2,4,6,8,10,12,14, | 67,69,71,73,75,77,79, |

Badminton Danmark

Badminton.dk

info@badminton.dk

Tlf. +45 70 60 50 76

DGI Badminton

DGI.dk/badminton

badminton@info.dgi.dk

Tlf. +45 79 40 40 59

| | | | | | | | | | |
|----|----|---|-----|-------|--------------|----------------------------------|--|--|---|
| | | | | | | 88,104,120, | | 18,20,22,24,26,28,30, 34,36,38,40,42,44,46, 50,52,54,56,58,60,62, | 83,85,87,89,91,93,95, 99,101,103,105,107,109,111, 115,117,119,121,123,125,127 |
| 73 | 16 | 1 | 128 | 33,96 | 17,49,80,112 | 9,25,41,57,72, 55 88,104,120, | | 2,4,6,8,10,12,14, 18,20,22,24,26,28,30, 34,36,38,40,42,44,46, 50,52,54,56,58,60,62, | 67,69,71,75,77,79, 83,85,87,89,91,93,95, 99,101,103,105,107,109,111, 115,117,119,121,123,125,127 |
| 74 | 16 | 1 | 128 | 33,96 | 17,49,80,112 | 9,25,41,57,72, 54 88,104,120, | | 2,4,6,8,10,12,14, 18,20,22,24,26,28,30, 34,36,38,40,42,44,46, 50,52,54,58,60,62, | 67,69,71,75,77,79, 83,85,87,89,91,93,95, 99,101,103,105,107,109,111, 115,117,119,121,123,125,127 |

(fortsættes næste side)

Badminton Danmark

Badminton.dk

info@badminton.dk

Tlf. +45 70 60 50 76

DGI Badminton

DGI.dk/badminton

badminton@info.dgi.dk

Tlf. +45 79 40 40 59

fortsat

| Antal deltagere | Antal seedede spillere | Seedede spilleres placering | | | | | Antal oversiddere | Placering af oversiddere | |
|-----------------|------------------------|-----------------------------|--------------|-------|--------------|----------------------------|-------------------|--|--|
| | | 1 | 2 "skema" | 3/4 | 5/8 | 9/16 | | Øverste halvdel | Nederste halvdel |
| 75 | 16 | 1 | 128 | 33,96 | 17,49,80,112 | 9,25,41,57,72, 88,104,120, | 53 | 2,4,6,8,10,12,14, 18,20,22,24,26,28,30, 34,36,38,40,42,44,46, 50,52,54,58,60,62, | 67,69,71,75,77,79, 83,85,87,89,91,93,95, 99,101,103,107,109,111, 115,117,119,121,123,125,127 |
| 76 | 16 | 1 | 128 | 33,96 | 17,49,80,112 | 9,25,41,57,72, 88,104,120, | 52 | 2,4,6,8,10,12,14, 18,20,22,26,28,30, 34,36,38,40,42,44,46, 50,52,54,58,60,62, | 67,69,71,75,77,79, 83,85,87,89,91,93,95, 99,101,103,107,109,111, 115,117,119,121,123,125,127 |
| 77 | 16 | 1 | 128 | 33,96 | 17,49,80,112 | 9,25,41,57,72, 88,104,120, | 51 | 2,4,6,8,10,12,14, 18,20,22,26,28,30, 34,36,38,40,42,44,46, 50,52,54,58,60,62, | 67,69,71,75,77,79, 83,85,87,91,93,95, 99,101,103,107,109,111, 115,117,119,121,123,125,127 |
| 78 | 16 | 1 | 128 | 33,96 | 17,49,80,112 | 9,25,41,57,72, 88,104,120, | 50 | 2,4,6,8,10,12,14, 18,20,22,26,28,30, 34,36,38,42,44,46, 50,52,54,58,60,62, | 67,69,71,75,77,79, 83,85,87,91,93,95, 99,101,103,107,109,111, 115,117,119,121,123,125,127 |
| 79 | 16 | 1 | 128 | 33,96 | 17,49,80,112 | 9,25,41,57,72, 88,104,120, | 49 | 2,4,6,8,10,12,14, 18,20,22,26,28,30, 34,36,38,42,44,46, 50,52,54,58,60,62, | 67,69,71,75,77,79, 83,85,87,91,93,95, 99,101,103,107,109,111, 115,117,119,123,125,127 |
| 80 | 16 | 1 | 128 | 33,96 | 17,49,80,112 | 9,25,41,57,72, 88,104,120, | 48 | 2,4,6,10,12,14, 18,20,22,26,28,30, 34,36,38,42,44,46, 50,52,54,58,60,62, | 67,69,71,75,77,79, 83,85,87,91,93,95, 99,101,103,107,109,111, 115,117,119,123,125,127 |
| 81 | 16 | 1 | 128 | 33,96 | 17,49,80,112 | 9,25,41,57,72, 88,104,120, | 47 | 2,4,6,10,12,14, 18,20,22,26,28,30, 34,36,38,42,44,46, 50,52,54,58,60,62, | 69,71,75,77,79, 83,85,87,91,93,95, 99,101,103,107,109,111, 115,117,119,123,125,127 |
| 82 | 16 | 1 | 128 | 33,96 | 17,49,80,112 | 9,25,41,57,72, 88,104,120, | 46 | 2,4,6,10,12,14, 18,20,22,26,28,30, 34,36,38,42,44,46, 50,52,54,58,60, | 69,71,75,77,79, 83,85,87,91,93,95, 99,101,103,107,109,111, 115,117,119,123,125,127 |
| 83 | 16 | 1 | 128 | 33,96 | 17,49,80,112 | 9,25,41,57,72, 88,104,120, | 45 | 2,4,6,10,12,14, 18,20,22,26,28,30, | 69,71,75,77,79, 83,85,87,91,93,95, |

Badminton Danmark

Badminton.dk
 info@badminton.dk
 Tlf. +45 70 60 50 76

DGI Badminton

DGI.dk/badminton
 badminton@info.dgi.dk
 Tlf. +45 79 40 40 59

| | | | | | | | | |
|----|----|---|-----|-------|--------------|----------------------------------|--|---|
| 84 | 16 | 1 | 128 | 33,96 | 17,49,80,112 | 9,25,41,57,72, 44 88,104,120, | 34,36,38,42,44,46, 50,52,54,58,60, 2,4,6,10,12,14, 18,20,22,26,28, 34,36,38,42,44,46, 50,52,54,58,60, | 101,103,107,109,111, 115,117,119,123,125,127 69,71,75,77,79, 83,85,87,91,93,95, 101,103,107,109,111, 115,117,119,123,125,127 |
|----|----|---|-----|-------|--------------|----------------------------------|--|---|

(fortsættes næste side)

Badminton Danmark

Badminton.dk

info@badminton.dk

Tlf. +45 70 60 50 76

DGI Badminton

DGI.dk/badminton

badminton@info.dgi.dk

Tlf. +45 79 40 40 59

fortsat

| Antal deltagere | Antal seedede spillere | Seedede spilleres placering | | | | | Antal oversiddere | Placering af oversiddere | |
|-----------------|------------------------|-----------------------------|--------------|-------|--------------|----------------------------------|-------------------|---|---|
| | | 1 | 2 "skema" | 3/4 | 5/8 | 9/16 | | Øverste halvdel | Nederste halvdel |
| 85 | 16 | 1 | 128 | 33,96 | 17,49,80,112 | 9,25,41,57,72, 43 88,104,120, | 43 | 2,4,6,10,12,14, 18,20,22,26,28, 34,36,38,42,44,46, 50,52,54,58,60, | 69,71,75,77,79, 85,87,91,93,95, 101,103,107,109,111, 115,117,119,123,125,127 |
| 86 | 16 | 1 | 128 | 33,96 | 17,49,80,112 | 9,25,41,57,72, 42 88,104,120, | 42 | 2,4,6,10,12,14, 18,20,22,26,28, 34,36,38,42,44, 50,52,54,58,60, | 69,71,75,77,79, 85,87,91,93,95, 101,103,107,109,111, 115,117,119,123,125,127 |
| 87 | 16 | 1 | 128 | 33,96 | 17,49,80,112 | 9,25,41,57,72, 41 88,104,120, | 41 | 2,4,6,10,12,14, 18,20,22,26,28, 34,36,38,42,44, 50,52,54,58,60, | 69,71,75,77,79, 85,87,91,93,95, 101,103,107,109,111, 117,119,123,125,127 |
| 88 | 16 | 1 | 128 | 33,96 | 17,49,80,112 | 9,25,41,57,72, 40 88,104,120, | 40 | 2,4,6,10,12, 18,20,22,26,28, 34,36,38,42,44, 50,52,54,58,60, | 69,71,75,77,79, 85,87,91,93,95, 101,103,107,109,111, 117,119,123,125,127 |
| 89 | 16 | 1 | 128 | 33,96 | 17,49,80,112 | 9,25,41,57,72, 39 88,104,120, | 39 | 2,4,6,10,12, 18,20,22,26,28, 34,36,38,42,44, 50,52,54,58,60, | 69,71,77,79, 85,87,91,93,95, 101,103,107,109,111, 117,119,123,125,127 |
| 90 | 16 | 1 | 128 | 33,96 | 17,49,80,112 | 9,25,41,57,72, 38 88,104,120, | 38 | 2,4,6,10,12, 18,20,22,26,28, 34,36,38,42,44, 50,52,58,60, | 69,71,77,79, 85,87,91,93,95, 101,103,107,109,111, 117,119,123,125,127 |
| 91 | 16 | 1 | 128 | 33,96 | 17,49,80,112 | 9,25,41,57,72, 37 88,104,120, | 37 | 2,4,6,10,12, 18,20,22,26,28, 34,36,38,42,44, 50,52,58,60, | 69,71,77,79, 85,87,91,93,95, 101,103,109,111, 117,119,123,125,127 |
| 92 | 16 | 1 | 128 | 33,96 | 17,49,80,112 | 9,25,41,57,72, 36 88,104,120, | 36 | 2,4,6,10,12, 18,20,26,28, 34,36,38,42,44, 50,52,58,60, | 69,71,77,79, 85,87,91,93,95, 101,103,109,111, 117,119,123,125,127 |
| 93 | 16 | 1 | 128 | 33,96 | 17,49,80,112 | 9,25,41,57,72, 35 88,104,120, | 35 | 2,4,6,10,12, 18,20,26,28, | 69,71,77,79, 85,87,93,95, |

Badminton Danmark

Badminton.dk
 info@badminton.dk
 Tlf. +45 70 60 50 76

DGI Badminton

DGI.dk/badminton
 badminton@info.dgi.dk
 Tlf. +45 79 40 40 59

| | | | | | | | | |
|----|----|---|-----|-------|--------------|----------------------------------|--|---|
| | | | | | | | 34,36,38,42,44, 50,52,58,60, | 101,103,109,111, 117,119,123,125,127 |
| 94 | 16 | 1 | 128 | 33,96 | 17,49,80,112 | 9,25,41,57,72, 34 88,104,120, | 2,4,6,10,12, 18,20,26,28, 34,36,42,44, 50,52,58,60, | 69,71,77,79, 85,87,93,95, 101,103,109,111, 117,119,123,125,127 |

(fortsættes næste side)

Badminton Danmark

Badminton.dk

info@badminton.dk

Tlf. +45 70 60 50 76

DGI Badminton

DGI.dk/badminton

badminton@info.dgi.dk

Tlf. +45 79 40 40 59

fortsat

| Antal deltagere | Antal seedede spillere | Seedede spilleres placering | | | | | Antal oversiddere | Placering af oversiddere | |
|-----------------|------------------------|-----------------------------|--------------|-------|--------------|----------------------------------|-------------------|--|---|
| | | 1 | 2 "skema" | 3/4 | 5/8 | 9/16 | | Øverste halvdel | Nederste halvdel |
| 95 | 16 | 1 | 128 | 33,96 | 17,49,80,112 | 9,25,41,57,72, 33 88,104,120, | 33 | 2,4,6,10,12, 18,20,26,28, 34,36,42,44, 50,52,58,60, | 69,71,77,79, 85,87,93,95, 101,103,109,111, 117,119,125,127 |
| 96 | 16 | 1 | 128 | 33,96 | 17,49,80,112 | 9,25,41,57,72, 32 88,104,120, | 32 | 2,4,10,12, 18,20,26,28, 34,36,42,44, 50,52,58,60, | 69,71,77,79, 85,87,93,95, 101,103,109,111, 117,119,125,127 |
| 97 | 16 | 1 | 128 | 33,96 | 17,49,80,112 | 9,25,41,57,72, 31 88,104,120, | 31 | 2,4,10,12, 18,20,26,28, 34,36,42,44, 50,52,58,60, | 71,77,79, 85,87,93,95, 101,103,109,111, 117,119,125,127 |
| 98 | 16 | 1 | 128 | 33,96 | 17,49,80,112 | 9,25,41,57,72, 30 88,104,120, | 30 | 2,4,10,12, 18,20,26,28, 34,36,42,44, 50,52,58, | 71,77,79, 85,87,93,95, 101,103,109,111, 117,119,125,127 |
| 99 | 16 | 1 | 128 | 33,96 | 17,49,80,112 | 9,25,41,57,72, 29 88,104,120, | 29 | 2,4,10,12, 18,20,26,28, 34,36,42,44, 50,52,58, | 71,77,79, 85,87,93,95, 103,109,111, 117,119,125,127 |
| 100 | 16 | 1 | 128 | 33,96 | 17,49,80,112 | 9,25,41,57,72, 28 88,104,120, | 28 | 2,4,10,12, 18,20,26, 34,36,42,44, 50,52,58, | 71,77,79, 85,87,93,95, 103,109,111, 117,119,125,127 |
| 101 | 16 | 1 | 128 | 33,96 | 17,49,80,112 | 9,25,41,57,72, 27 88,104,120, | 27 | 2,4,10,12,18,20,26, 34,36,42,44,50,52,58, | 71,77,79,87,93,95, 103,109,111,117,119,125,127 |
| 102 | 16 | 1 | 128 | 33,96 | 17,49,80,112 | 9,25,41,57,72, 26 88,104,120, | 26 | 2,4,10,12,18,20,26, 34,36,42,50,52,58, | 71,77,79, 87,93,95, 103,109,111, 117,119,125,127 |
| 103 | 16 | 1 | 128 | 33,96 | 17,49,80,112 | 9,25,41,57,72, 25 88,104,120, | 25 | 2,4,10,12,18,20,26, 34,36,42,50,52,58, | 71,77,79,87,93,95, 103,109,111,119,125,127 |
| 104 | 16 | 1 | 128 | 33,96 | 17,49,80,112 | 9,25,41,57,72, 24 88,104,120, | 24 | 2,4,10,18,20,26, 34,36,42,50,52,58, | 71,77,79,87,93,95, 103,109,111,119,125,127 |
| 105 | 16 | 1 | 128 | 33,96 | 17,49,80,112 | 9,25,41,57,72, 23 88,104,120, | 23 | 2,4,10,18,20,26, 34,36,42,50,52,58, | 71,79,87,93,95, 103,109,111,119,125,127 |

Badminton Danmark

Badminton.dk

info@badminton.dk

Tlf. +45 70 60 50 76

DGI Badminton

DGI.dk/badminton

badminton@info.dgi.dk

Tlf. +45 79 40 40 59

| | | | | | | | | |
|-----|----|---|-----|-------|--------------|-------------------|---------------------------------|--|
| 106 | 16 | 1 | 128 | 33,96 | 17,49,80,112 | 9,25,41,57,72, 22 | 2,4,10,18,20,26, 88,104,120, | 71,79,87,93,95, 103,109,111,119,125,127 |
| 107 | 16 | 1 | 128 | 33,96 | 17,49,80,112 | 9,25,41,57,72, 21 | 2,4,10,18,20,26, 88,104,120, | 71,79,87,93,95, 103,111,119,125,127 |
| 108 | 16 | 1 | 128 | 33,96 | 17,49,80,112 | 9,25,41,57,72, 20 | 2,4,10,18,26, 88,104,120, | 71,79,87,93,95, 103,111,119,125,127 |

(fortsættes næste side)

Badminton Danmark

Badminton.dk

info@badminton.dk

Tlf. +45 70 60 50 76

DGI Badminton

DGI.dk/badminton

badminton@info.dgi.dk

Tlf. +45 79 40 40 59

fortsat

| Antal deltagere | Antal seedede spillere | Seedede spilleres placering | | | | | Antal oversiddere | Placering af oversiddere | |
|-----------------|------------------------|-----------------------------|-----------|-------|--------------|----------------------------|-------------------|-------------------------------|----------------------------------|
| | | 1 | 2 "skema" | 3/4 | 5/8 | 9/16 | | Øverste halvdel | Nederste halvdel |
| 109 | 16 | 1 | 128 | 33,96 | 17,49,80,112 | 9,25,41,57,72, 88,104,120, | 19 | 2,4,10,18,26, 34,36,42,50,58, | 71,79,87,95, 103,111,119,125,127 |
| 110 | 16 | 1 | 128 | 33,96 | 17,49,80,112 | 9,25,41,57,72, 88,104,120, | 18 | 2,4,10,18,26, 34,42,50,58, | 71,79,87,95, 103,111,119,125,127 |
| 111 | 16 | 1 | 128 | 33,96 | 17,49,80,112 | 9,25,41,57,72, 88,104,120, | 17 | 2,4,10,18,26, 34,42,50,58, | 71,79,87,95,103,111,119,127 |
| 112 | 16 | 1 | 128 | 33,96 | 17,49,80,112 | 9,25,41,57,72, 88,104,120, | 16 | 2,10,18,26, 34,42,50,58, | 71,79,87,95,103,111,119,127 |
| 113 | 16 | 1 | 128 | 33,96 | 17,49,80,112 | 9,25,41,57,72, 88,104,120, | 15 | 2,10,18,26, 34,42,50,58, | 79,87,95,103,111,119,127 |
| 114 | 16 | 1 | 128 | 33,96 | 17,49,80,112 | 9,25,41,57,72, 88,104,120, | 14 | 2,10,18,26,34,42,50, | 79,87,95,103,111,119,127 |
| 115 | 16 | 1 | 128 | 33,96 | 17,49,80,112 | 9,25,41,57,72, 88,104,120, | 13 | 2,10,18,26,34,42,50, | 79,87,95,111,119,127 |
| 116 | 16 | 1 | 128 | 33,96 | 17,49,80,112 | 9,25,41,57,72, 88,104,120, | 12 | 2,10,18,34,42,50, | 79,87,95,111,119,127 |
| 117 | 16 | 1 | 128 | 33,96 | 17,49,80,112 | 9,25,41,57,72, 88,104,120, | 11 | 2,10,18,34,42,50, | 79,95,111,119,127 |
| 118 | 16 | 1 | 128 | 33,96 | 17,49,80,112 | 9,25,41,57,72, 88,104,120, | 10 | 2,10,18,34,50, | 79,95,111,119,127 |
| 119 | 16 | 1 | 128 | 33,96 | 17,49,80,112 | 9,25,41,57,72, 88,104,120, | 9 | 2,10,18,34,50, | 79,95,111,127 |
| 120 | 16 | 1 | 128 | 33,96 | 17,49,80,112 | 9,25,41,57,72, 88,104,120, | 8 | 2,18,34,50, | 79,95,111,127 |
| 121 | 16 | 1 | 128 | 33,96 | 17,49,80,112 | 9,25,41,57,72, 88,104,120, | 7 | 2,18,34,50, | 95,111,127 |
| 122 | 16 | 1 | 128 | 33,96 | 17,49,80,112 | 9,25,41,57,72, 88,104,120, | 6 | 2,18,34, | 95,111,127 |
| 123 | 16 | 1 | 128 | 33,96 | 17,49,80,112 | 9,25,41,57,72, 88,104,120, | 5 | 2,18,34, | 95,127 |
| 124 | 16 | 1 | 128 | 33,96 | 17,49,80,112 | 9,25,41,57,72, 88,104,120, | 4 | 2,34, | 95,127 |
| 125 | 16 | 1 | 128 | 33,96 | 17,49,80,112 | 9,25,41,57,72, 88,104,120, | 3 | 2,34, | 127 |

Badminton Danmark

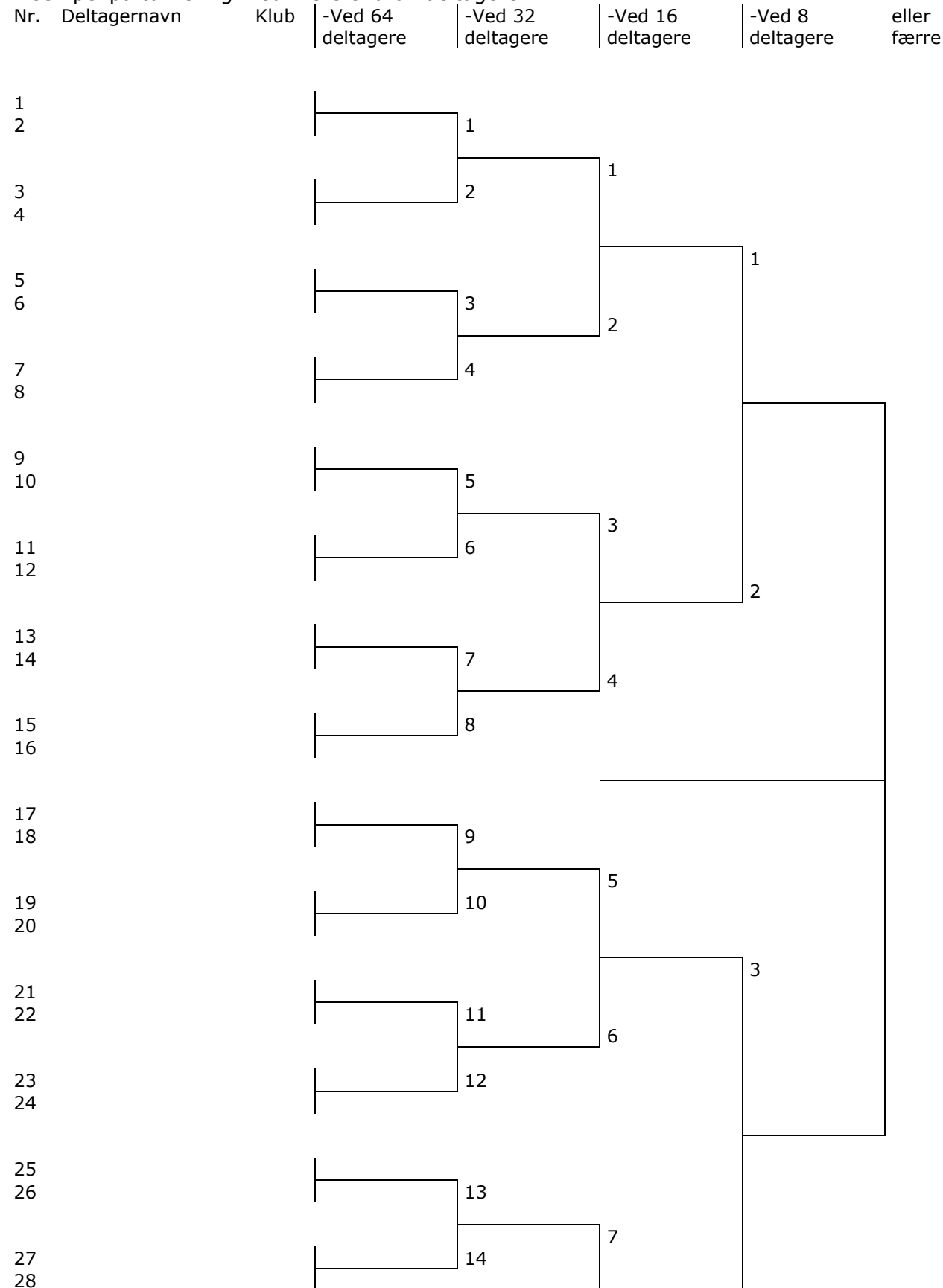
Badminton.dk
 info@badminton.dk
 Tlf. +45 70 60 50 76

DGI Badminton

DGI.dk/badminton
 badminton@info.dgi.dk
 Tlf. +45 79 40 40 59

| | | | | | | | | |
|-----|----|---|-----|-------|--------------|------------------|---|-----|
| 126 | 16 | 1 | 128 | 33,96 | 17,49,80,112 | 9,25,41,57,72, 2 | 2 | 127 |
| | | | | | | 88,104,120, | | |
| 127 | 16 | 1 | 128 | 33,96 | 17,49,80,112 | 9,25,41,57,72, 1 | 2 | |
| | | | | | | 88,104,120, | | |
| 128 | 16 | 1 | 128 | 33,96 | 17,49,80,112 | 9,25,41,57,72, 0 | | |
| | | | | | | 88,104,120, | | |

Eksempel på turnering med mere end 64 deltagere.

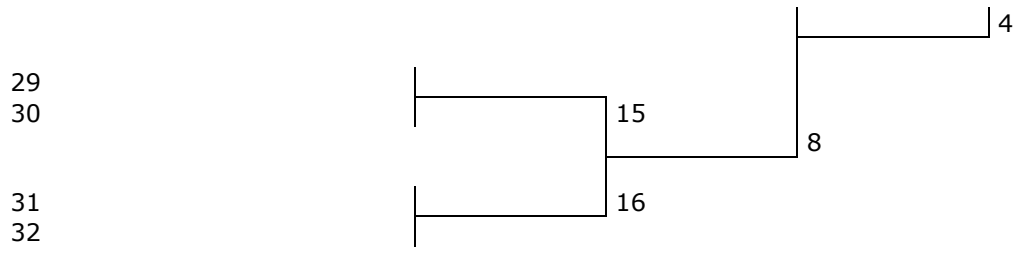


Badminton Danmark

Badminton.dk
info@badminton.dk
Tlf. +45 70 60 50 76

DGI Badminton

DGI.dk/badminton
badminton@info.dgi.dk
Tlf. +45 79 40 40 59



Badminton Danmark

Badminton.dk
 info@badminton.dk
 Tlf. +45 70 60 50 76

DGI Badminton

DGI.dk/badminton
 badminton@info.dgi.dk
 Tlf. +45 79 40 40 59

Eksempel fortsat

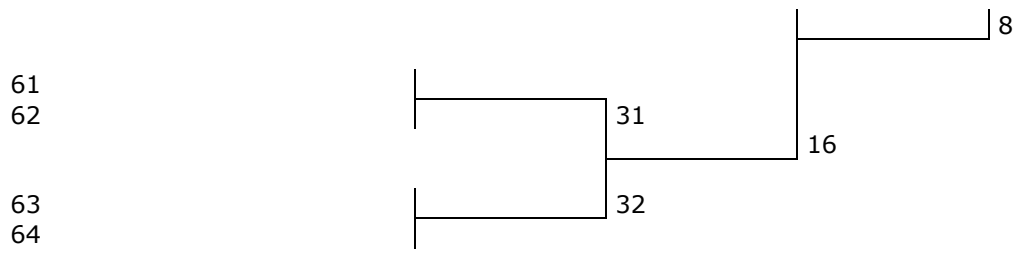
| Nr. | Deltagernavn | Klub | -Ved 64 deltagere | -Ved 32 deltagere | -Ved 16 deltagere | -Ved 8 deltagere | eller færre |
|-----|--------------|------|----------------------|----------------------|----------------------|---------------------|----------------|
| 33 | | | 17 | 9 | 5 | 6 | |
| 34 | | | | | | | |
| 35 | | | 18 | 11 | 7 | 8 | |
| 36 | | | | | | | |
| 37 | | | 19 | 10 | 6 | 7 | |
| 38 | | | | | | | |
| 39 | | | 20 | 11 | 7 | 8 | |
| 40 | | | | | | | |
| 41 | | | 21 | 12 | 8 | 9 | |
| 42 | | | | | | | |
| 43 | | | 22 | 13 | 9 | 10 | |
| 44 | | | | | | | |
| 45 | | | 23 | 14 | 10 | 11 | |
| 46 | | | | | | | |
| 47 | | | 24 | 15 | 11 | 12 | |
| 48 | | | | | | | |
| 49 | | | 25 | 16 | 12 | 13 | |
| 50 | | | | | | | |
| 51 | | | 26 | 17 | 13 | 14 | |
| 52 | | | | | | | |
| 53 | | | 27 | 18 | 14 | 15 | |
| 54 | | | | | | | |
| 55 | | | 28 | 19 | 15 | 16 | |
| 56 | | | | | | | |
| 57 | | | 29 | 20 | 16 | 17 | |
| 58 | | | | | | | |
| 59 | | | 30 | 21 | 17 | 18 | |
| 60 | | | | | | | |

Badminton Danmark

Badminton.dk
info@badminton.dk
Tlf. +45 70 60 50 76

DGI Badminton

DGI.dk/badminton
badminton@info.dgi.dk
Tlf. +45 79 40 40 59



IBF-skema kan rekvireres for 128 deltagere hos DBF.